

Eagle Lake Newsletter – November 2009

1907- 2009 Celebrating 100 plus years of responsible lake stewardship

Dear friends and residents of Eagle Lake,

The colors of fall are fading away. Temperatures are dipping down to that number that not all of us like to see. But as they say all good things must come to an end.



The summer of 2009 was a roller coaster of good and bad weather. It ended on a high note with some of the nicest days occurring in September, and the first snow coming one day after the Columbus Day weekend.

Milfoil Project Update



The dive team has wrapped up operations for the year. While they were successful in many respects they have also observed continued growth and spreading of milfoil.

They have observed milfoil growing in depths as shallow as 12 inches and as deep as 22-25 feet. Most experts previously thought that it would not grow in waters this shallow or that deep. Discovering this is troubling based on the amount of areas we have in the under 25' depth range. By late August portions of most of the 13 plus large patches were "topped out" with milfoil buds and flowers showing their locations on the surface of the lake. This has not happened to this extent for several years. One such patch is pictured here.



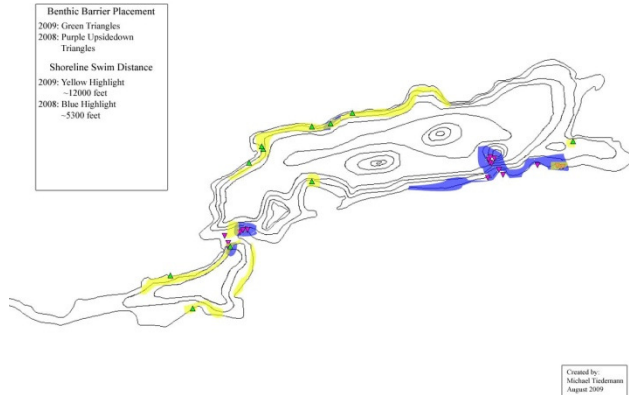
The plants were still at the surface well into late October by which time most native vegetation had died off and was starting to decompose on the bottom. Other lake Associations across NYS reported similar outstanding growth this summer.

The dive team continued the matting and hand harvesting process. They have deployed 49,000 Sq. Ft. of new mats held down by 10,000 lbs. of steel ballast this year and pulled and relocated 21,000 Sq. Ft. of existing mats that had already been placed in 2008 (only a portion of the mats placed in 2008 were relocated). A total of 73,000 Sq. Ft. of milfoil has now been matted in the 2008-2009 work seasons. In addition to the area matted, the total wet weight of milfoil hand picked from the lake in 2008 –2009 is 15,270 lbs. This process has been effective in some of the smaller beds and has cleaned up a lot of isolated plants. Most of the larger beds and some areas with dangerous bottom

Eagle Lake Newsletter – November 2009

1907- 2009 Celebrating 100 plus years of responsible lake stewardship

conditions can't be controlled with this process. The divers swam over 17,000 feet of shoreline on the eastern and western lake sections, surveying, hand picking and matting isolated plants and small beds. Much of the south and north shores have been cleaned of isolated plants. Pictured here is a map of the area swam.



A mid September plan to relocate mats that were placed in early July was stopped after the dive team noticed that after removing the first few mats for relocation, some of the milfoil plants stood back up after having been covered for more than 8 weeks. They did not look healthy, but they were far from dead. As a result, mats will be allowed to over winter where they were placed initially in 2009.

Work site selection this year was based on matching the need for mats with the daily availability of mats, the potential for use of a herbicide the following year, the plant composition of the patch, the size of the patch, and working from the smallest patches up. Most of the remaining milfoil patches are 15,000 Sq. Ft. or larger or are in areas that don't allow for mats to be placed. To provide some perspective as to what the size of a 15,000 Sq. Ft. patch looks like, the patches matted this summer just in front of Baldwin's boathouse located on the northern entrance corner point to Ti Bay and the bed at the northern tip of Hurd Point just west of

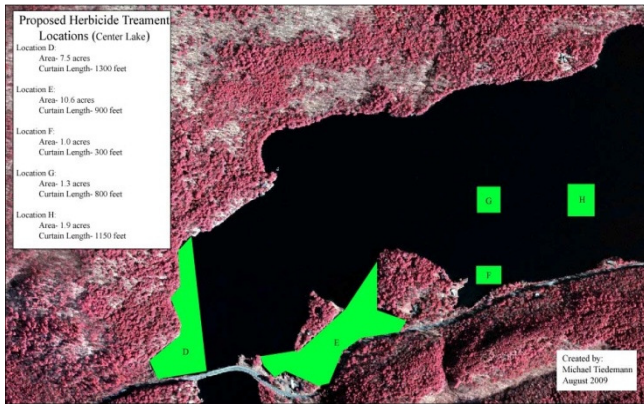
Loose's place, are approximately 15,000 Sq. Ft. in size. These two sites alone each required some 50-60 10' x 22' mats and approximately 4 days of dive time for mat placement and perimeter hand harvesting. Pictured here is a 600 square foot mat as a diver finishes rolling out the last edge.



So far the matting of patches appears to be successful in some locations, A site hand harvested/ matted in 2008 south of the causeway has been greatly reduced in size, but individual plants still remain/return within the mixed vegetation or stone covered areas around these site, at a second location by Shultz's at the entrance to Ti Bay despite 2 seasons of hand picking and the placement of several mats over the patches, milfoil continues to spread rampantly around the mats despite the divers' efforts. The overall view from the dive team is that "we may win a few battles but we'll lose the war" In 2003 there was about 8 acres of milfoil identified. Today there is estimated to be about 75 surface acres that would need to be addressed. We need another solution to this problem before it is too late. Pictured is a map of the center of the lake with milfoil patches and sizes shown.

Eagle Lake Newsletter – November 2009

1907- 2009 Celebrating 100 plus years of responsible lake stewardship



Milfoil is something we have been dealing with for almost 30 years. The problem is multiplying exponentially. The more plants we have, the more possible fragments there are to break off and cause more rapid spreading of the plant to new locations. The divers have also observed that plants can, in effect, create “runners” that allow it to spread out from the plant/patch itself.



To monitor the effect of matting and to gauge the spread in areas not yet picked several “compass targets” have been placed in the lake. An underwater digital camera survey will take place at these sites several times over the 2009-10 season. Five images will be collected from each site, one from the surface looking down, and four looking out over each of the compass points. A “compass target” is pictured here on land before deployment in the lake.

The continued course of action is to continue work with the Towns of Ti and Crown Point in submitting an application to use the herbicide Renovate OTF to treat the milfoil. Renovate has been successfully used in Vermont, New Hampshire, three New York lakes (out side the Blue Line) and many other states. To date, no one has applied to the APA for or received a permit from the APA to use this aquatic herbicide inside the “Blue Line”. The APA is the real hold up in this process as they have added an additional requirement beyond the DEC’s approved permitting requirements. The main concern of the APA is product drift. They are suggesting that containment curtains be used around each treatment location. The use of curtains would double or triple the cost of the project. The DEC approved Renovate for use in New York State in 2007 without this requirement.

Renovate was successfully used in 2008 in Saratoga Lake as well as, Waneta & Lamoka lakes in the western part of the state. In 2009 additional sites in Saratoga as well as Waneta & Lamoka were treated with Renovate. It was also used for the first time this spring in Cazenovia Lake, near Syracuse. Treatments of the above lakes are planned for the future. All reports have been positive. Reports for its use in Vermont and New Hampshire have also been positive. Copies of the pre and post plant surveys as well as the completed permit applications for some of these lakes can be found on the Eaglelake1.org web site.

We have started working with a lawyer in Glens Falls to assist with our permit application process. The lawyer specializes in APA related cases and hopes to be successful in getting the application approved. His plan is to build the permit based on “doing good science” in a demonstration or test case basis. It is felt by

Eagle Lake Newsletter – November 2009

1907- 2009 Celebrating 100 plus years of responsible lake stewardship

the project team that he might have a better chance of arguing the case for our situation. The Essex County Board of Supervisors passed a resolution supporting the use of Renovate in Eagle Lake in early 2009 and there has been encouraging and open dialog with the Adirondack Council to gain their support.

As we move forward, one of the hurdles we are also facing is a shortage of funding. New/additional attorney costs and added APA requirements have pushed the original cost estimates used in the grant for an initial herbicide treatment up significantly above the amounts originally budgeted for these two items. Additionally, and despite the best efforts of all our volunteers, the speed of mat placement by the divers exceeded the number of volunteers and volunteer hours available to the project this summer. Even with the diver's best efforts to wait out mat shortages by performing other milfoil removal related activities, it became necessary on occasion to hire several youth from outside of the Eagle Lake community to perform mat construction, a decision not rendered lightly, and with an associated cost not originally budgeted for in the Grant. Up until this time, we have been successful in securing grants from the state and various other agencies in the past. With the recent economic downturn the state budget has tightened up and there is less of a chance that we will see as much, if any, additional public funding. We are looking to raise an additional \$ 25,000 for the initial treatment with related assay water testing and post herbicide application plant survey work. Approximately \$55,000 of the original \$110,000 remains in the milfoil eradication grant. The grant's 50/50 matching requirement of \$55,000 was fully funded with previous ELPOI member contributions (Thank You Members!), and our NYS Aid to Localities grants. **WE NEED YOUR HELP!** Please take a moment to

think about what you can do. Over the next 8 months could we all set aside \$1.00 per day in a cookie jar? If all 80 of our possible members set aside \$30.00 per month for the next 8 months we would have \$19,200. Together with the money we have now we can **MEET OUR GOAL!** We know that this may not be the best time to ask for more assistance but if everyone gives a little we can get a lot. We need to save our lake from this invasive plant that is running rampant due to our great water clarity.

Tier III Plant Survey

One of the costs associated with the herbicide portion of the project is the requirement by the DEC and APA for a tier III plant survey. This survey utilizes a double-sided garden rake, tossed into the lake in several locations to collect plant specimens in the littoral zone (under 20 feet depth) of the lake. The quantity and diversity of the plants pulled up on the rake are noted as well as the GPS coordinates for the "grab". Individual plant samples are then bagged and returned to the lab for photographing and archiving. The cost for the pre herbicide application survey in 2008 was \$7570.00. Additional tier III survey(s) will need to be completed post herbicide application. Pictured here is the team from Allied Biological completing the field portion of the survey. A copy of the survey can be downloaded from the Eagle Lake website.



Eagle Lake Newsletter – November 2009

1907- 2009 Celebrating 100 plus years of responsible lake stewardship

Giving Thanks

We would like to thank the volunteers who help make the ELPOI the organization that it is: Thanks to those that took the time to help stitch mats.



Jim and Joyce Shultz, have been very generous in allowing the dive team access to their property as a staging area for this project. Be sure to also thank the dive team for their hard work. Rolf, Dianne and Michael Tiedemann and Amy Jacques have done a great job for us this year. Thank you!

Thank you to Chris Hyde and his Family at Hyde's RV & Boat for donating the use of a pontoon boat again this year. It has been a great help to speed up the matting process.



It is pictured here before it is loaded with

several hundred pounds of mats, diver gear, divers, and air compressor.

Thank you to Town Supervisor's Dale French and Bob Dedrick for their many years of support for the Eagle Lake community. Dale was defeated in his bid for re-election and Bob is retiring from public office at the end of this year.

Thank you to Paul & Lloyd Burroughs for their continued CSLAP lake water testing and spillway dam maintenance efforts.

Thank you to Rin Fraize for his continued in-house water testing and his effort and guidance as past president.

Thank you to all of those who put on the much-enjoyed Annual Picnic in July.

Because of the combined efforts of all our volunteers around the lake, we all continue to richly enjoy this wonderful lake community. Thank you everyone. You make a difference.

Membership

A membership renewal reminder letter was recently sent to those who had not been heard from this year, the response was very good. Several residents included an additional donation to be used for milfoil control. Thank You! It is not too late to join the ELPOI. There are two levels of membership. Full memberships are for property owners with land that abuts or has a right of way to the lake, Associate memberships are for anyone who does not own land on the lake but is interested in becoming involved with our cause. We value your opinions and would like to grow our membership! Please go to www.eaglelake1.org for more information and to print an application. Your membership dues as well as any other donations made to the ELPOI are tax deductible.

Eagle Lake Newsletter – November 2009

1907- 2009 Celebrating 100 plus years of responsible lake stewardship

DEC Officer Presentation

If you were at the annual meeting you got to hear from Department of Environmental Conservation Officer Harold Barber.



He reviewed the NYS boating regulations and various other laws as they relate to Eagle Lake. We have posted a summary of this information on the website and will be including it with the spring 2010 newsletter. Look for it on “ELPOI” page at www.eaglelake1.org

New Cold Water Boating Law

A new law requiring life jackets be worn in all boats less than 21 feet from Nov. 1st thru May 1st.

Annual Meeting



EPLPOI members gathered on a sunny day July 11, 2009 to discuss business that came

before them. Topics of discussion included boating rules, milfoil project review of 2008 work and 2009 plans, election of officers and other general business. A full report of all meeting topics will be presented in the subsequent newsletters and posted on the web.

2009 –10 ELPOI Officers Elected

The following folks have offered to volunteer their time and expertise to guide the ELPOI in the 2009-10 years. Andy Belkevich- President, Steve Stubing- Vice President, Mary Loose- Secretary, Rin Fraize –Acting Treasurer. Board members consist of Chyrl Pynn, Harry Walton, Ann Patterson, Mary Lloyd Burroughs and Chris Hyde.

New Town Supervisors

TI and CP will be under the new leadership of Supervisor Debra Malaney in Ti and Bethany Kosmider in CP. The ELPOI looks forward to working with these folks as they transition into their new positions

Around The Lake

You may have noticed that there is a large population of geese on Turtle rock and other shoreline properties. Please do not feed them. They have left their droppings all over the rock and other places they frequent. Please be careful swimming in the area. We will need to monitor this situation in the future. Member Jack Mulcahy reports that he has had success in deterring the geese from spending much time on his shore, using a motion activated water sprinkler called “Scarecrow motion activated sprinkler”. He purchased his on EBay.

The public beach area will need maintenance next year. The shoreline needs to be raked and the grass should be mowed twice a summer. Anyone looking to volunteer a few hours, their time would be greatly

Eagle Lake Newsletter – November 2009

1907- 2009 Celebrating 100 plus years of responsible lake stewardship

appreciated. Also for next season we will be updating the signage at the boat launch and beach.

If you have guests that use their boats in other lakes please be sure the trailers are free of milfoil, livewell(s) and bilge are rinsed and dried and the bottom of the boat has been washed. Engines can also hold lake water and should be flushed for ten minutes. This procedure should be used anytime a boat is taken from one lake to another. The largest vector for the spread for aquatic invasives is by boat transport. Many of the invertebrate invaders can live for several days or more in the smallest amounts of trapped water that is transported when boats are moved.

Beavers... Dam



As always the beavers are at work near the dam. Rolf and Andy removed a dam twice during the fall of 2008 and Rolf and Leland Loose removed one in the spring of 2009. Andy was able to remove several beavers in the time between the fall and spring dam removals. The beavers and the heavy rains kept the lake at plus 2" to plus 6" most of the summer. At the end of the season we were back to the "normal level".

Logging Truck Roll Over



On July 15th a fully loaded logging truck heading east bound rolled over and spilled its load across RT 74 just east of the cause way. The driver was the only one hurt and only sustained minor bruises. Chilson and Ti fire and emergency squads along with Ti and NYS police responded. DEC spill response was also brought in to help with the containment of approximately 30 gallons of leaking diesel fuel. The road was closed for several hours as RB Motors worked to right and remove the truck. A special spill response team spent the rest of the day mopping up spilled fuel from the road and



digging up and replacing contaminated soil from along the shoulder of the road. Property owner Stubbing had some damage to their fence and yard as a result of where the truck and its cargo came to rest. Cause of the accident is attributed to excessive speed and driver error.

Eagle Lake Newsletter – November 2009

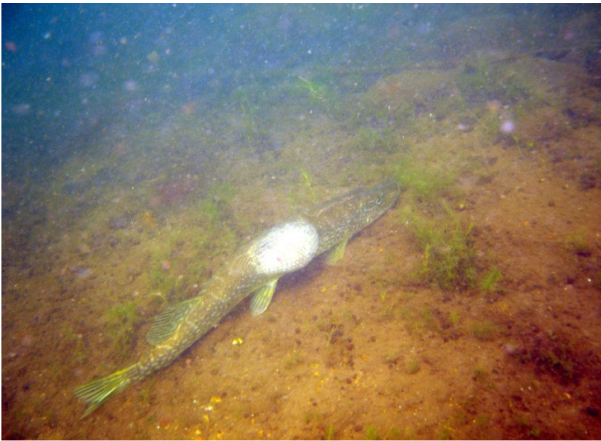
1907- 2009 Celebrating 100 plus years of responsible lake stewardship

Sightings of Interest:

A bear was encountered after dark at two different camps on the same evening in mid August on the north shore of Eagle Lake. Some property damage was reported from the startled and scared residents who were present at the time.

A martin (looks like a mix between an otter and a raccoon) was also spotted on Eagle Lake's north shore in mid-April, just long enough to get a positive ID on it. This animal is not normally found in the lower reaches of the Park.

Just this past September, a bull moose was seen crossing Rt. 74 just beyond the eastern end of the lake.



The divers spotted many different fish depending on the location in the lake they were working. The most interesting was the Northern Pike pictured here. The Pike had a tumor of some type about the size of a soft ball on its side. (Picture by Amy Jacques)

In Memory Of

Please keep family and friends of the following members who passed in your thoughts. They will be missed.

Josephine Poloski, Tim Bush, Michael Hayes.

Things to Celebrate

Births / weddings / anniversaries? – Let us know...

ELPOI Web Site

We are having a 2009 summer photo contest. Please submit your favorite photo at the lake from the summer of 2009. They will be posted on the website and you can vote for your favorite one. The results will be revealed in the next issue. Get yours in today! Send pictures to Chris Hyde at Cdhyde@nycap.rr.com

Take a look at the website – It is constantly changing... You never know what you might find. www.eaglelake1.org

Check out the “ELPOI” page for a copy of this newsletter in full color, the boating safety information, the photo contest and more.

Web site traffic

A hit counter was placed on a few select pages this past spring, it is used to monitor what pages are viewed and where the traffic comes from. Most months since its installation have averaged 75- 100 unique visitors per month and these folks have viewed over 750 items. Most visitors are local to the upstate NY area but the map of visitors has hits from all over the world.

History Corner

Be sure to take a look at the photo album section of the website. It is loaded with great pictures and history about the lake. If you would like to add your story or photos please submit them to the link shown at the top of the page.

Eagle Lake Newsletter – November 2009

1907- 2009 Celebrating 100 plus years of responsible lake stewardship

Also if you would like to step back in time pick up the book "Up On Chilson Hill" By Lois Moody Gunning , it is a look at the early days of the Chilson area, with a few chapters devoted to stories and information about Long Pond or Chilson Lake or Eagle Lake , depending on when you came in to town. It is available from the Penfield Museum by calling 518-597-3804

LOOK WHAT'S COMING UP IN OUR NEXT ISSUE

- 2010 Membership Renewal
- *Milfoil Project Update*
- *2009 Summer Photo contest- Results*
- *ALA Meeting Update*

Late addition news:

It was recently learned that Lake Luzerne, also located in side the Park, has turned in an application to use Renovate in a much shallower bay and with a different configuration than what would work on Eagle Lake. The team is monitoring this.

Annual Meeting date – July 10th 2010.

Email List

Do we have your email address?
We would like to keep you informed in a timely fashion and email is a great way to do that.

Would you rather receive this newsletter by email? Please email Chris Hyde at Cdhyde@nycap.rr.com to get on the list.

. We wish everyone a happy and safe Thanksgiving and holiday season. We hope to see all of you at the annual meeting in July.

Thank you for taking the time to read this information and keeping up to date on the news around the lake.

*Written on behalf of the board by,
Chris Hyde.*

*Supporting milfoil project information
provided by Rolf Tiedemann.*

Eagle Lake Newsletter – November 2009

1907- 2009 Celebrating 100 plus years of responsible lake stewardship

Eagle Lake Property Owners, Inc.



Officers 2009-10

President – Andy Belkevich
Vice President – Steve Stubing
Secretary – Mary Loose
Treasurer – Rin Fraize (Acting)

Board of Directors

Chyrl Pynn 7/10
Harry Walton 7/10
Ann Patterson 7/11
Mary Lloyd Burroughs 7/12
Chris Hyde 7/12

Visit us on the web at www.eaglelake1.org

Responsible lake stewardship since 1907

Established in 1907 and incorporated in 1993, ELPOI is a 501 (c) (3) not-for-profit organization that serves to protect the mutual interests of its lake property owners and to maintain the environmental and recreational quality of Eagle Lake.

Eagle Lake Property Owners, Inc.
C/o 11 Deepwood Drive
Ticonderoga, New York 12883

